

# IRRIGATION SYSTEMS

PRODUCT CATALOG



*\*U.S. and Canada only*

 **Reinke**



# CONTENTS

<i>RPM CONTROL PANELS</i> .....	<b>04</b>	<i>SPRINKLERS &amp; PRESSURE REGULATORS</i> .....	<b>20</b>
<i>CROPX® SOIL MONITORING TECHNOLOGY</i> .....	<b>06</b>	<i>END GUNS &amp; BOOSTER PUMPS</i> .....	<b>22</b>
<i>REMOTE MANAGEMENT</i> .....	<b>08</b>	<i>BUILT TO LAST</i> .....	<b>23</b>
<i>VARIABLE RATE IRRIGATION (VRI)</i> .....	<b>10</b>	<i>SWING ARM CORNERS</i> .....	<b>24</b>
<i>CENTER PIVOT SYSTEMS</i> .....	<b>12</b>	<i>CUSTOMIZED SOLUTIONS</i> .....	<b>25</b>
<i>INNOVATIVE DESIGN</i> .....	<b>14</b>	<i>ESAC™ ELECTRONIC SWING ARM CORNER</i> .....	<b>26</b>
<i>TOWER DESIGN</i> .....	<b>16</b>	<i>LATERAL MOVE SYSTEMS</i> .....	<b>28</b>
<i>THREE-WHEEL TOWER BASE</i> .....	<b>17</b>	<i>TOWABLE SYSTEMS</i> .....	<b>30</b>
<i>DRIVE TRAIN</i> .....	<b>18</b>	<i>OUR DEALERS</i> .....	<b>32</b>
<i>TIRES</i> .....	<b>19</b>	<i>REINKE FIRSTS</i> .....	<b>34</b>



# ***THE REINKE DIFFERENCE***

For more than 50 years, being “different with purpose” has been at the core of all we do at Reinke and it’s made us the irrigation system of choice for farmers worldwide. Yes, our pivots look different, but there’s a reason behind the design – to add strength without adding weight and to increase efficiency without sacrificing durability. From pivot center to end gun, we’ve created solutions that exceed expectations. It’s just what we do.

## ***100% REINKE CERTIFIED***

Any time you buy a Reinke product, be it an entire pivot, or one part, you can be sure it’s 100% Reinke Certified. What does 100% Reinke Certified mean? It means we stand behind our products. We hold ourselves to a higher standard, from engineering and design to manufacturing and out to the services our dealerships provide.





# RPM CONTROL PANELS

Reinke Precision Management (RPM) control panels are custom built for reliability and trouble-free use. Plus, they're easy to upgrade and customize.

## 0.1 RPM BASIC

- ▲ Value priced
- ▲ High-quality, powder-coated steel enclosure
- ▲ Features include: commercial or generator power, end gun control, speed control, directional operations, auto reverse and start/stop

## 0.2 RPM STANDARD

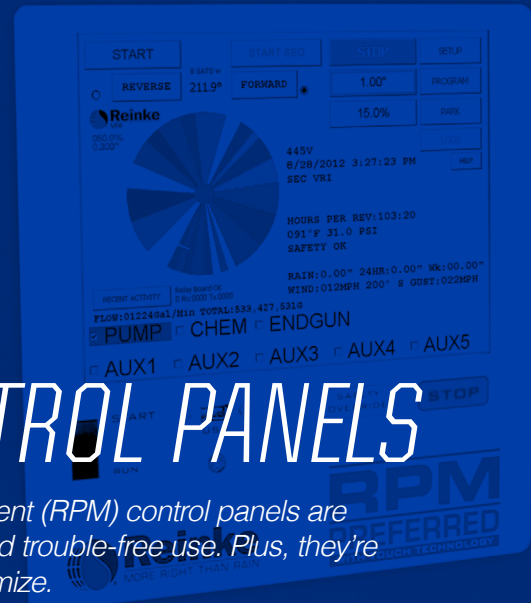
- ▲ Easily upgradeable
- ▲ High-quality, powder-coated aluminum enclosure
- ▲ Includes RPM Basic panel features, plus: higher corrosion-resistant enclosure with many additional options such as digital speed control, end gun override, low-voltage safety and frost control

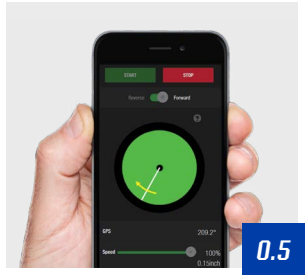
## 0.3 RPM ADVANCED

- ▲ Expanded inclusive features
- ▲ Standardized digital speed control display
- ▲ Includes RPM Standard panel features, plus: digital end gun and auxiliary control, sector programming and GPS for improved accuracy

## 0.4 RPM ADVANCED PLUS™

- ▲ Improved user experience
- ▲ Full-color 4.3" customizable touch screen display
- ▲ Includes RPM Advanced panel features, plus: flow monitoring, digital pump control, selectable auxiliary options and pressure monitoring with transducer





**0.5 RPM CONNECT™**

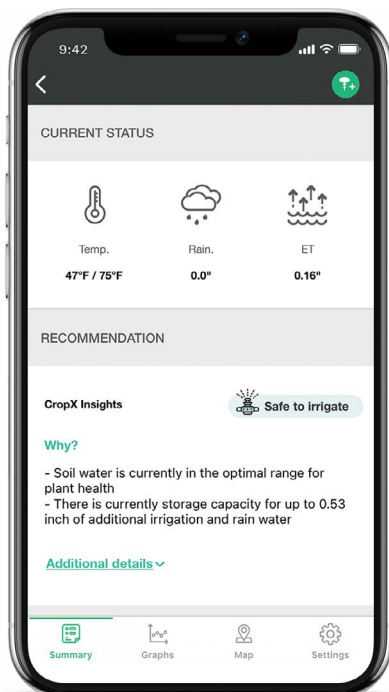
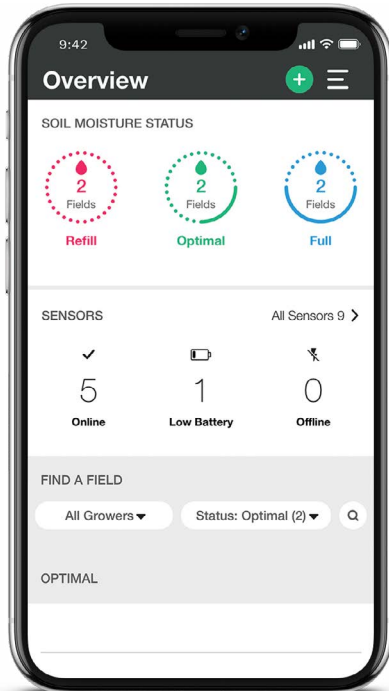
- ▲ Screenless, remote-operated panel using ReinCloud®
- ▲ Limited controls on the panel including start, direction and stop
- ▲ Same features as RPM Advanced Plus through ReinCloud

**0.6 RPM PREFERRED TOUCH SCREEN**

- ▲ All-inclusive panel
- ▲ Larger full-color 10.1" touch screen display
- ▲ Includes RPM Advanced Plus panel features, plus: VRI, start sequence, multilingual display, USB port, downloadable logs and much more

**0.7 RPM ANNEX™**

- ▲ Upgrade an existing panel to the latest pivot control technology
- ▲ Utilizes backend components of the host panel
- ▲ Works on Reinke or competitive panels
- ▲ Available configurations: Advanced Plus (AnnexAP™), Connect (AnnexCT™) and Preferred Touch Screen (AnnexPF™)



# CROPX<sup>®</sup> SOIL MONITORING TECHNOLOGY

## THE WORLD'S FINEST PRESCRIPTIVE IRRIGATION SCHEDULING

CropX auto-optimizes your Reinke irrigation scheduling by reading thousands of data points in real time to maximize your yield and minimize waste.

- ▲ **Soil Sensor** – Each sensor collects moisture, temperature and electrical conductivity at multiple depths.
- ▲ **Precise Weather** – CropX uses various ag-specific weather data services to obtain precise, local weather information.
- ▲ **Aerial Imagery** – CropX pulls high-resolution aerial images from several satellites to retrieve a new image every two to three days, on average.
- ▲ **Topography Maps** – Each sensor retrieves data from various sources to provide high resolution data on the flow of water and nutrients in your soil and field.
- ▲ **Soil Mapping** – CropX uses publicly-available and user-provided soil maps to analyze precise moisture levels, hydraulic properties and organic matter in your soil.
- ▲ **Hydraulic Models** – CropX uses a highly precise hydraulic model to improve the precision of the field irrigation plan to reduce water usage, control fertilizer distribution in the soil and monitor the plant's uptake rate.
- ▲ **Crop Models** – CropX learns the behavior of its supported crops from all the relevant aspects: water uptake, growth stages, nutrient uptake, water and salinity stresses and more.
- ▲ **User Input** – By collecting relevant field data from its end users, CropX can provide you meaningful insights, alerts and information.

# RULE THE RAIN

Built by farmers for farmers, CropX® leverages thousands of data points above and below ground to maximize the performance of your Reinke irrigation system and minimize waste. In fact, field tests have demonstrated a 10% crop-yield enhancement with over 30% water savings.

## SOIL MOISTURE DEVICE

CropX soil monitoring sensor is far more than a tool – it's an easy-to-install power move that puts next-level crop control in the palm of your hands.

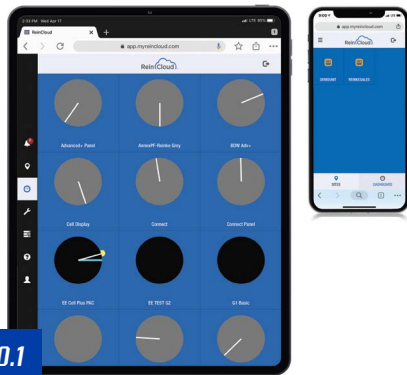
- ▲ **Self-calibration and easy installation** get you up and running in minutes to deliver irrigation insights in record time.
- ▲ **The only affordable all-in-one solution** for all crop types – no setup costs and no other needed equipment.
- ▲ **Cutting-edge wireless connectivity** is accessible even in remote areas offering cellular and satellite connectivity.
- ▲ **Innovative spiral design** offers unparalleled accuracy on soil moisture readings with a true read of undisturbed soil in your field.

## ALL UNDER ONE REINCLOUD®

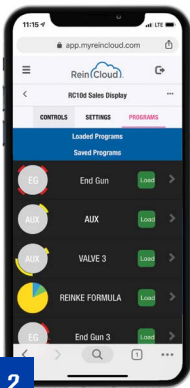
Whether you control 400 acres or 4,000, CropX integration through Reinke's ReinCloud® software platform creates a complete solution for understanding your crops and controlling your irrigation with power and precision.

- ▲ Organize your operation by property, zone and equipment, so you can quickly monitor and control numerous pivots at one time.
- ▲ From high-level data to in-depth graphs, ReinCloud + CropX crunch the numbers, so you can make informed decisions on the go.
- ▲ Stay informed and connected on any device whether it's a smartphone, tablet, laptop or desktop computer.

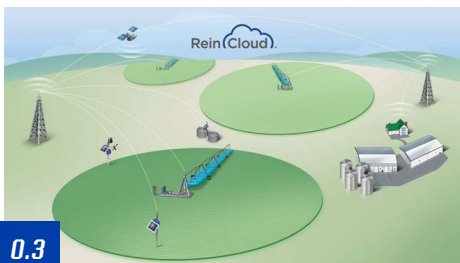




0.1



0.2



0.3

# REMOTE MANAGEMENT

*A better way to collect and display valuable data for improved irrigation management. From irrigation monitoring and controls to soil moisture and weather data, ReinCloud puts your ag-based data to work.*

## 0.1 REINCLOUD

A powerful web-based software platform where all the monitor and control features are located. With the ReinCloud dashboard, the ability to monitor and operate numerous pivots from one location makes it possible to be in more than one place at a time.

When you need to look at what is going on with your operation, the smart irrigation controller dashboard will give you information at a glance. You can also quickly view irrigation system status, weather, sensor data and irrigation controls, making it easy to make on-the-go decisions.

View your data on a high-level widget or in a detailed graph. It's also easy to get an at-a-glance look on the mapping widget, depicting your equipment where it resides in the field.

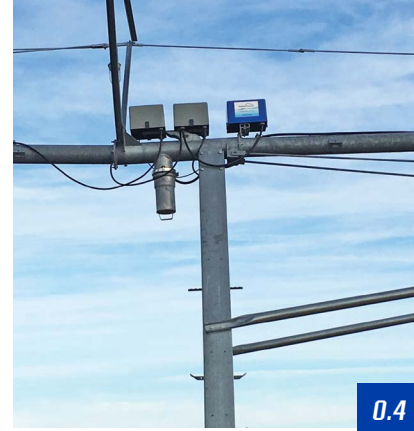
Stay informed on system status through notifications.

## 0.2 REINCLOUD-READY® PRODUCTS

ReinCloud-Ready products make it easy to access a wide range of equipment using satellite, cell or radio communications. From irrigation controllers to soil moisture stations, ReinCloud-Ready products provide the right data to help make informed decisions for your operation.

## 0.3 BASE STATION

The Base Station is a radio-based communication system that allows you to monitor and control any system from your home or office computer as if you were standing right in front of the panel, saving you time, labor and operating costs. Using a computer does NOT require a change to the data management plan.



0.4

### 0.4 RC10

The hardware that controls the pivot via ReinCloud with a cellular or satellite connection, which is housed within Reinke's patented, double-wall tower box and can also be installed in the main control panel or at the end of the system.

### 0.5 RS300 FIELD STATION OPTIONS

Whether you're looking for tank level data or for a full weather and climate station, the RS300 can provide a versatile and reliable platform compatible with a variety of sensor options.

#### Weather and Climate

- RX30 Weather Station Combo
- Wind speed and direction
- Ambient temperature
- Humidity
- Rainfall
- Leaf wetness
- Solar radiation

#### Water Metering

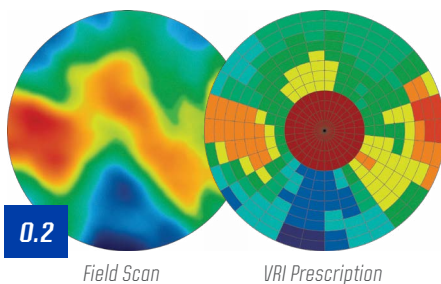
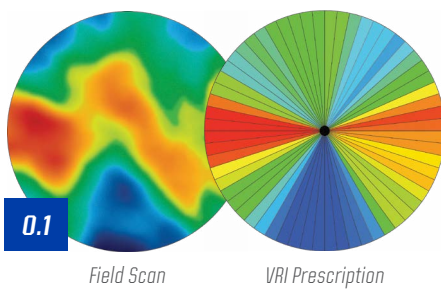
- Pressure transducer (0–50 psi)
- Pressure transducer (0–200 psi)
- Ultrasonic water level
- Submersible water level
- Deep well water sensor
- Pressure switch
- Flow meter monitoring (select digital meters)

#### Soil Moisture

- Sentek® enviroSCAN Probe
- AquaCheck® Sub-Surface Probe
- Decagon® 5TE Probe



0.5



# VARIABLE RATE IRRIGATION (VRI)

**Optimize water distribution.  
Maximize yield potential.**

*Variable rate irrigation (VRI) applies precise amounts of water to match numerous variables within each field. Multiple prescriptions can be created based on soil variables and topography. From the RPM Preferred Touch Screen, you'll be able to immediately verify that everything is running properly.*

## 0.1 SECTOR

Sector VRI segments the coverage area into multiple pie-like slices (sectors) up to  $\frac{1}{10}^{\text{th}}$  of a degree by controlling the speed of the pivot, which increases or decreases the water application rate. The base application depth can be easily adjusted higher or lower without changing the prescription. Works with existing sprinkler packages.

## 0.2 ZONE

In addition to the Sector VRI, the coverage area can further be divided into as many as 84 rings. By combining the sectors and rings, more than 300,000 independently controlled zones are created for precision water application. Additional hardware is required.

## 0.3 SAC VRI

As efficient as the parent system, the patent pending Reinke SAC VRI provides precision irrigation throughout the swing arm corner. This user-friendly technology includes a predictive prescription that can be optimized easily over time. The Reinke SAC VRI is available with the RPM Preferred Touch Screen or AnnexPF panel. Additional hardware is required.



# **TECHNOLOGY FOR TOMORROW**

We believe in developing precision management technologies that stay two, three, ten steps ahead of tomorrow's challenges. And that starts in the field by continuously testing and researching what works and where we can improve our systems. It's not about irrigation today, but how we can more efficiently irrigate in the future.



0.1



0.2



0.3

# CENTER PIVOT SYSTEMS

## 0.1 ELECTROGATOR®

Introduced in 1968, the Electrogator® was the first reversible, electric-drive center pivot with under-truss design. The Electrogator II is an improved version with many advancements that provide benefits including increased stability, multiple outlet spacing options and longer spans.

- ▲ Pipe sizes: 6", 6 5/8", 8 5/8" and 10"
- ▲ Galvanized steel, painted chromium nickel+, galvanized chromium nickel+, aluminum, stainless steel and poly-lined
- ▲ Slope: The maximum grade limit for a Reinke span is 15%. **Up to 20% with the X-Treme package.**

## 0.2 ALUMIGATOR®

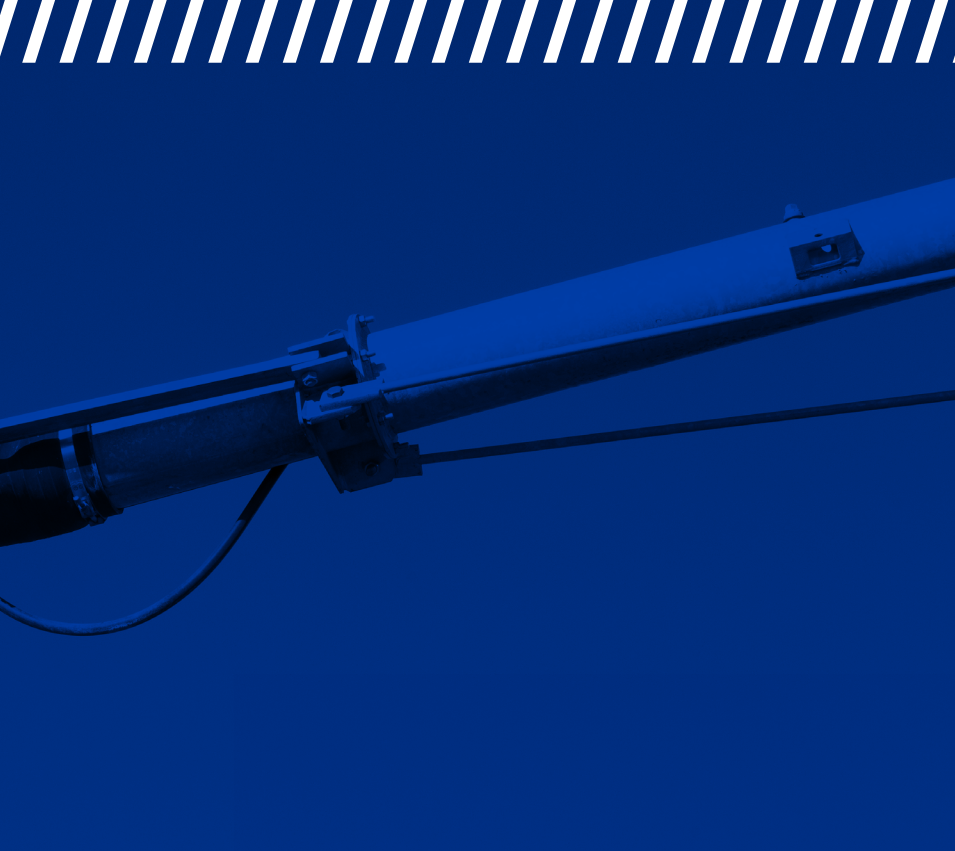
The Alumigator® is the industry's ONLY aluminum center pivot, which is 40% lighter than all-steel systems. This virtually eliminates wheel tracks, making it ideal for operations like sod farms. The Alumigator also features the widest tower base in the industry.

- ▲ Pipe sizes: 6" and 8"
- ▲ A-60G and A-80G are options that include aluminum pipe with a galvanized steel trussing and towers

## 0.3 MINIGATOR®

The Minigator® is a cost-effective solution that's ideal for smaller fields and low-gallonage wells that can be configured with a Kwik Tow option for easy transport with a pickup or tractor.

- ▲ Pipe size: 4 1/2"
- ▲ Pipe material: galvanized only



## PIVOT CENTER

### Stands the Test of Time

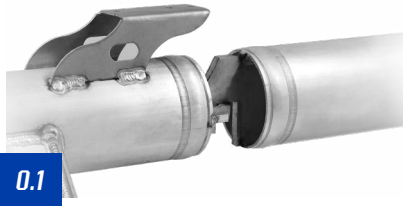
01. Corrosion-resistant, domed aluminum collector reel
02. Heavy-duty full sweep, 90° elbows at bottom and top riser pipe to minimize friction loss
03. Hook-and-receiver pipe joint connection for unparalleled rotational movement and flexibility
04. The Maintenance-Free Bearing is made with a nonmetallic material, reducing friction for smooth rotation and uninterrupted movement that carries a high load capacity and increases system longevity and durability. This patent pending bearing is the industry's only maintenance-free bearing that doesn't need to be greased
05. Riser gasket seals against a stainless-steel wear sleeve, creating a long-lasting seal
06. Optional pivot center walkway
07. 6", 8" or 10" riser pipe available with eye-level pressure gauge
08. Corrosion-resistant, powder-coated aluminum main control panel enclosure with a pneumatic strut that holds the door open even on the windiest day
09. 8" x 3" x 1 1/4" roll-formed, C-channel legs for unparalleled strength and durability
10. Easily retrofitted to any competitive pivot pad
11. Easily accessible, adjustable height, main control panel mount

3 Leg Pivot Center is Available on 4 1/2, 6 & 6 5/8" pipe diameters



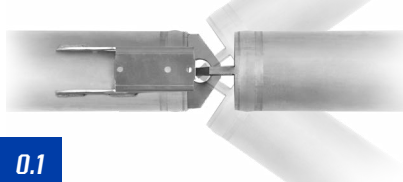
# INNOVATIVE DESIGN

Side View, Rotational Movement



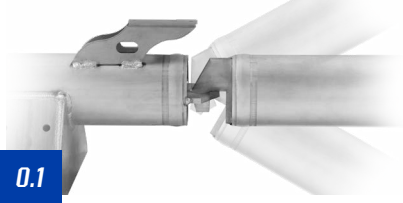
0.1

Top View, Side-to-Side Movement

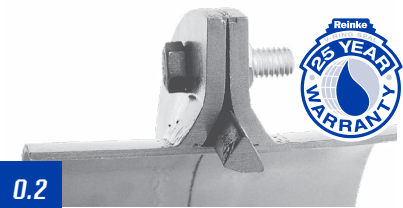


0.1

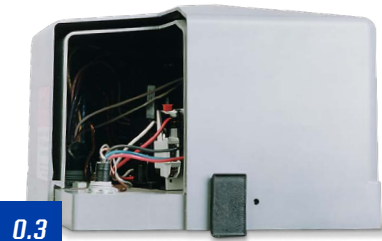
Side View, Up-and-Down Movement



0.1



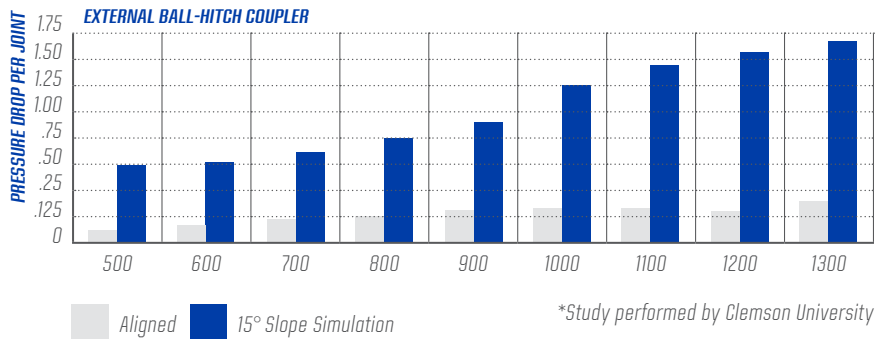
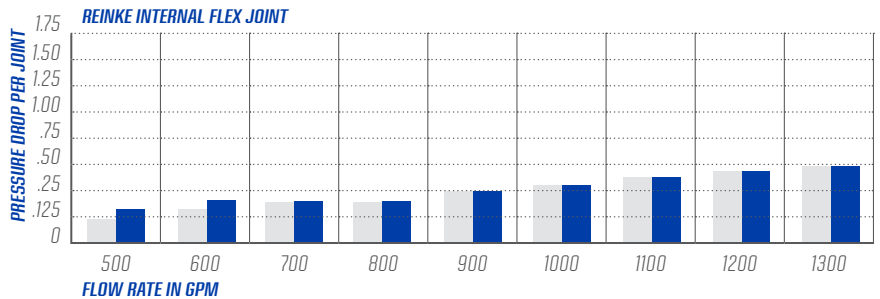
0.2



0.3

## 0.1 INTERNAL FLEX JOINT

The tables illustrate that the Reinke internal flex joint has less friction loss at a real application slope of 15° as compared to the external ball-hitch coupler.



## 0.2 PATENTED V-RING SEAL

Each seal is securely set inside the pipe completely protected from the deteriorating effects of UV light.

- ▲ No disruption of water flow
- ▲ Flange-to-flange contacts creates a stronger seal
- ▲ 25-year warranty

## 0.3 DOUBLE-WALLED TOWER BOX

Exclusive double-walled tower box provides a moisture-free environment for electrical components.

- ▲ High-quality, UV-resistant materials
- ▲ The strongest, longest-lasting tower box in the industry
- ▲ Mechanical safety interlock on cover requires first disconnecting power to the tower

*Durability. Stability. Efficiency. All benefits of Reinke's innovative design aimed at providing superior performance and industry-leading ROI. From our patented V-ring seal that offers no disruption of water flow to the strongest, longest lasting tower box in the industry to our high-strength single-leg tower design—Reinke irrigation systems are just built better.*

### 0.4 SPANS ENGINEERED FOR HIGH PERFORMANCE

Reinke spans are engineered for maximum strength and minimum weight making it the most efficient irrigation system in the industry.

- ▲ Water pipe trussing is spaced every 19' (not 20' or 22' like our competitors) and made with high-strength steel for added support and an even load distribution
- ▲ Truss rods (5/8" or 3/4" diameter) are universal in length and made of high-strength, low-alloy steel
- ▲ 3" diameter, galvanized stiffener connects the bottom of the trussing to the tower leg, which diverts stress away from the water pipe
- ▲ Less crown height reduces the center of gravity, which increases stability

### 0.5 SINGLE-LEG TOWER

High-strength steel used in the single C-channel leg eliminates the need for cross bracing between the tower legs. That's why our single-leg tower always stands superior.

- ▲ Wider tower base for increased stability
- ▲ Less intrusive structure improves water application at the tower and causes less disturbance to taller crops
- ▲ Increased flotation for better performance

### 0.6 SPRINKLER OUTLETS

Features a 3/4" half coupler which is welded onto the pipe for increased strength and eliminates water flow obstruction caused by flow-drilled couplers.

- ▲ Outlet spacing is available in 30", 40" or 57" spacing
- ▲ Stainless steel couplers are added to chromium nickel pipe

### 0.7 SINGLE-PHASE POWER

Reinke's 230-volt single-phase option is ideal for center pivot systems running on small acreage fields where 480-volt three-phase power is not available. Single-phase systems are limited to a maximum length of 1000' or six towers, and are offered in all pipe materials using standard household power.

### INDUSTRY'S BEST STRUCTURAL WARRANTY



*Reinke offers a 5-year structural warranty that's unparalleled in the industry. With so few guarantees in farming, we want to give you more peace of mind.*





# TOWER DESIGN



0.1

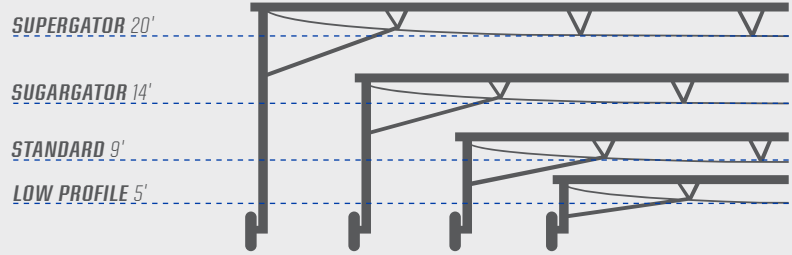


0.1

## 0.1 SMARTER TOWER SUPPORT DESIGN

- ▲ Attach 3" diameter, galvanized stiffeners to the bottom of the trussing instead of directly to the water pipe
- ▲ C-channel leg design features high strength steel, which eliminates the need for cross bracing between the tower legs
- ▲ Less intrusive structure improves water application at the tower and causes less disturbance to taller crops
- ▲ Increased flotation for better performance
- ▲ Wider tower base for increased stability

## 0.2 SPAN HEIGHTS



\*Crop clearance may vary based on span length

# THREE-WHEEL TOWER BASE

## 0.1 RIGID THREE-WHEEL TOWERS

Reinke three-wheel towers provide the additional flotation needed for soil types that easily rut and will also help in traversing difficult terrain. They're also more efficient and economical than competitive four-wheel tower options that add more weight to the system and more components to maintain.

## 0.2 FLEXIBLE THREE-WHEEL TOWER BASE

Our industry-exclusive, patented, award-winning tower base keeps all three tires on the ground at all times, placing a more consistent load on the drivetrain, providing power to all three wheels. Reducing the load on each tire improves flotation and reduces wheel ruts.



0.1



0.2



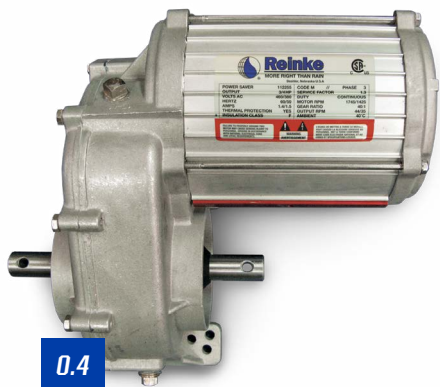
0.1



0.2



0.3



0.4



# DRIVE TRAIN

## 0.1 REINKE 10/16 WHEEL GEARBOX

Sporting its signature blue look, this high-performance gearbox will outwork and outlive any competitive gearbox in the field.

- ▲ New high-torque gears enable greater load capacity
- ▲ Extra long carriage bolts allow use with reinforced rims
- ▲ The 13-bolt mounting pattern is compatible with most center pivot brands
- ▲ Provides years of reliable service
- ▲ Minimizes gear wear allowing for a longer lifespan
- ▲ Reduces running temperatures, extending the gear's life
- ▲ Backed by the best warranty in the industry

## 0.2 WHEEL GEARBOX – TOWABLE

Possessing high-quality components, this gearbox can easily switch from towable to non-towable and carries a 10-year or 10,000-hour warranty.

## 0.3 SPRINKLER LUBE®

The unique dual-property lubricant ensures maximum protection against leaking, corrosion and gear wear, saving you money and downtime.

## 0.4 CENTER DRIVE

A high-efficiency gear motor delivers exceptional torque to propel your system over the roughest terrain and through difficult soil conditions. Specifically designed and built for the demands of mechanized irrigation.

- ▲ Helical gear design – 95% efficiency
- ▲ High-strength steel shafting provides long life and dependability
- ▲ Top fill plug positioned to set correct oil level
- ▲ All critical electrical connections are encapsulated to resist moisture penetration
- ▲ C.S.A. and UL approved
- ▲ 3 output RPMs (low 60:1 ratio or 29 RPM; standard 40:1 ratio or 43 RPM; high 25:1 ratio or 70 RPM)
- ▲ 8-year, 8,000-hour warranty



# TIRES

## 0.1 SPECIALTY TIRES

Reinke offers many different types and sizes of pneumatic tires, including our high-performance Titan radial tire. This radial tire has a much higher load rating than a standard 6-ply, making it ideal for use on swing arm corners or other longer and/or heavier spans

## 0.2 MACH II

A plastic tire developed for center pivot application. Molded from a special blend of Dow resin, the material provides ultra-violet protection, crack resistance, durability and a long life.

## 0.3 RHINO GATOR

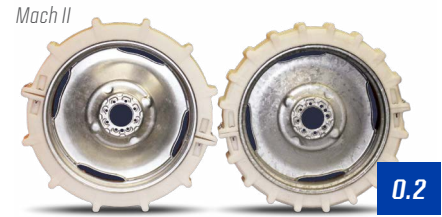
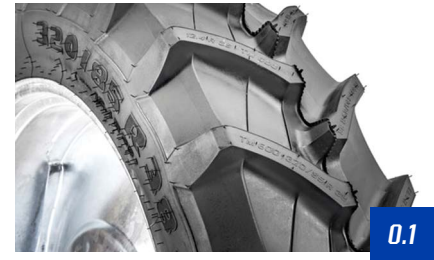
Engineered specifically for pivots, this airless tire option is a super-tough, high-density composite. The tire features a high-traction tread design with thousands of hours of proven field experience.

## 0.4 AGRI-TRAC

A tough, long-lasting trac that allows pivots to keep moving and easily handles heavy soil, mud bogs and hillsides (only available on 11" x 22.5" recap tires).

## 0.5 BARRICADES

An extra measure of safety if your pivot doesn't move in a complete circle. Long-lasting galvanized permanent or movable barricade options to ensure your pivot stops or reverses where you want it to.



# SPRINKLERS & PRESSURE REGULATORS



Impacts



Rotators



Accelerator



Orbitor



Spinner



Twister



i-Wob2



Xi-Wob



All Sprays

## 0.1 SPRINKLER OPTIONS

Reinke has always offered only the best sprinkler products to provide a multitude of droplet sizes and pattern widths using advanced rotary, offset axis rotary and fixed spray sprinkler technologies best suited for the specific crop or application. Whether you use our 30", 40" or 57" outlet spacing, we have a product available that's capable of generating the desired application rate. By utilizing a variety of plates, operating pressures, mounting heights and sprinkler spacing, we can custom design a sprinkler package to fit virtually every field.

## GENERAL SPRINKLER PERFORMANCE SPECIFICATIONS

SPRINKLER	PRESSURE RANGE (PSI)	PATTERN/STREAM TYPE	@ 12' HT	@ 6' HT	INTENSITY	AVG. RATE
Impacts	30 to 60	1 or 2 Slow Rotating Streams	73–105'	NA	HIGH	LOW
Rotators	10 to 40	Multi-Trajectory, Multiple Slow Rotating Streams	68–78'	50–68'	MEDIUM	LOW–MED
Accelerator	6 to 15	Multi-Trajectory, Multi-Variable Speed Rotating Streams	43–55'	36–58'	MEDIUM	MEDIUM
Orbitor	6 to 20	Offset Axis, Multi-Trajectory, Multiple Fast Rotating Streams	NA	42–58'	LOW	MEDIUM
Spinner	6 to 20	Full-Random, Multi-Trajectory, Multiple-Fast Rotating Streams	44–54'	42–56'	LOW	MEDIUM
Twister	6 to 20	Offset Axis, Multi-Trajectory, Multiple Fast Rotating Streams	45–62'	38–55'	LOW	MEDIUM
i-Wob2	10 to 15	Offset Axis, Multi-Trajectory, Multiple Fast Rotating Streams	NA	34–57'	LOW	MEDIUM
Xi-Wob	10 to 15	Offset Axis, Multi-Trajectory, Multiple Fast Rotating Streams	45–50'	35–51'	LOW	MEDIUM
All Sprays	6 to 20	Multi-Trajectory, Fixed Streams	35–55'	14–54'	HIGH	HIGH



## 0.2 PRESSURE REGULATORS

Pressure regulators are also useful for reducing higher pressures near the pivot point where the sprinkler nozzles are the smallest, thus minimizing plugging, wind drift and evaporation. They are required for use with many of the sprinkler options that have been engineered for operating pressures within a specific range, for optimum water application, extended life of the product and ultimately increased yield.

Pressure regulators eliminate the pressure variation at the sprinkler nozzle caused by:

- ▲ Variations in available water supply
- ▲ Fluctuations in demand such as end guns and swing arm corners
- ▲ Elevation changes within the field

## 0.3 DROPS AND SPRINKLER ACCESSORIES

As always, Reinke also offers a wide variety of sprinkler mounting components to customize your system to your specific needs. Contact your Reinke dealer for more information.





# END GUNS & BOOSTER PUMPS



## 0.1 END GUNS

End guns are an economical way to add profitable acres to your farm operation. The optimum operating pressure for an end gun can range between 40 and 70 psi and is based largely on the nozzle size of the end gun which is determined by the system length, total system flow (gpm), operating pressure and the distance of throw or effective coverage of the end gun.

### RECOMMENDED END GUN OPERATING PRESSURE

NOZZLE	END GUN PSI	END GUN GPM	BOOSTER PUMP/PSI BOOST	EFF. COVERAGE
.40"	40–50	28–32	2 HP / +32	59'–63'
.50"	43–53	47–53	2 HP / +33	75'–81'
.60"	46–56	71–79	2 HP / +33	86'–92'
.70"	50–60	100–110	2 HP / +31	97'–103'
.80"	54–64	138–151	2 HP / +28	108'–114'
.90"	57–67	172–187	5 HP / +33	115'–121'
1.0"	60–70	211–228	5 HP / +28	125'–133'

## 0.2 BOOSTER PUMPS

Reinke understands the importance of efficiency. We place the booster pump at the end of the system near the end gun to provide maximum power and minimize friction loss.



# BUILT TO LAST

*Every system that rolls off our line has been engineered and designed for season after season of reliable service. We take great care in choosing the highest-quality materials and implementing state-of-the-art manufacturing practices to not only live up to our high standards, but yours as well. As a matter of fact, one of our oldest systems has been in service since 1968.*

## **0.1 REINCOAT®**

A Reinke system is complete when it's galvanized by ReinCoat, a subsidiary of Reinke that boasts a state-of-the-art galvanizing facility and process. This includes pre-treatment of system components in a self-enclosed pre-treatment room, which prepares the components for dipping into the zinc-filled kettle contained in a white fume enclosure. The end result of the ReinCoat galvanizing process is a superior protective coating that is ready to stand up to the elements and add further strength to a Reinke irrigation system.



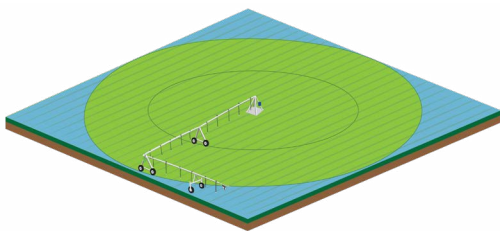
**SEE OUR GALVANIZING PROCESS IN ACTION  
WITH THIS REINKE YOUTUBE VIDEO!**



# SWING ARM CORNERS

## SAC GPS

In 2002, Reinke was the first to introduce SAC GPS to the market.



## SAC OPTIONS

**Mini-SAC:** 156' span + 51' end boom



**Mini-SAC:** 175' span + 61' end boom



**Standard SAC:** 194' span + 85' end boom



**Super SAC:** 213' span + 105' end boom



- ▲ Proven design for structural integrity
- ▲ Patent pending technology increases water uniformity on all Reinke SAC models
- ▲ Navigator GPS guidance for more efficient water application and precise path control
- ▲ Can be configured as either a 'leading' or 'trailing' swing arm position to increase the number of irrigated acres in part circle applications
- ▲ Improve Swing Arm water uniformity and precision with the patent pending SAC VRI

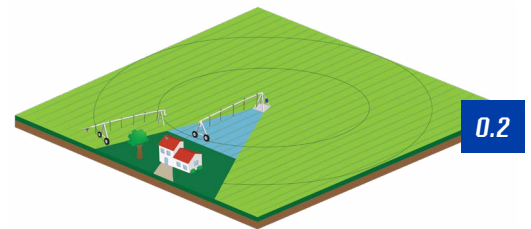
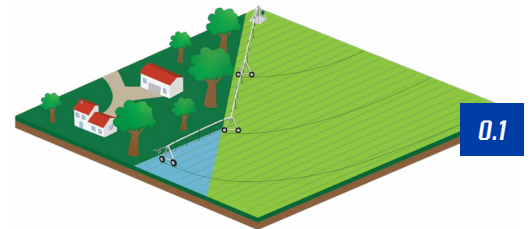
# CUSTOMIZED SOLUTIONS

## 0.1 WRAP SPAN

Wrap Span allows you to irrigate acres that were previously off-limits to center pivot irrigation. By placing the Wrap Span system in one or more joints (except the last bendable joint), you can wrap your pivot with or without the SAC or SSAC option up to 180°.

### Two Configurations

- ▲ Wraps up to 10° – utilizes a standard joint
- ▲ Wraps up to 90° – uses a span joint that reroutes the water through a flexible coupler



Easily disconnect one or more pivot or lateral move spans and proceed past an obstacle to irrigate previously unreachable acres. Pick up an additional span or spans of a different length if the field widens on the opposite side of the obstacle. Adjustable legs allow you to keep the span off the ground when it's disconnected. The auto-stop function self-aligns the parent system to the dropped span for ease in connecting.



# ESAC™ ELECTRONIC SWING ARM CORNER

## ELECTRONIC SWING ARM CORNER (ESAC™)

- ▲ ESAC's electronic zone control uses sequential sprinkler zones based on GPS positioning to provide extremely efficient and uniform water application.
- ▲ The ESAC is independently controlled by the S-Box, so it can be added regardless of which Main Control Panel is used on the parent system.
- ▲ Patent pending technology increase water uniformity on all Reinke Swing Arm Corner models.

## ESAC CONTROL PACKAGES

- ▲ Growers can choose from three ESAC Control Packages to suit their needs.
- ▲ ESAC 6.0 includes up to six sprinkler zones and comes standard on all four SAC models.

### Required Hardware:

- Reinke Navigator End of System GPS Control
- Valve Box (1)

### Optional Hardware:

- Air Compressor

- ▲ ESAC 12.0 and 12.5 come with additional sprinklers and allow up to 12 zones.

### Required Hardware:

- Reinke Navigator End of System GPS Control
- Valve Boxes (2)
- Air Compressor

- ▲ ESAC 12.5 uses SAC path to design the sprinkler package for optimal performance.





2020   
NEW PRODUCT  
CONTEST **People's Choice**  
Irrigation Association

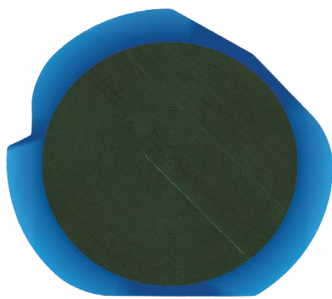
## ESAC UNIFORMITY

- ▲ ESAC is the best option for growers who want the efficient and uniform water application that electronic zone control provides.
- ▲ The ESAC uniformity applies precise amounts of water based on GPS positioning.
- ▲ The Swing Arm path is optimized to ensure proper water application.
- ▲ With ESAC controls, growers can virtually eliminate under- and over-watering throughout their fields corners.

**12.5 HIGH SQUARE FIELD**



**12.5 HIGH IRREGULAR FIELD**





0.1



0.2



0.3

# LATERAL MOVE SYSTEMS

Our Electrogator and Alumigator lateral move systems receive the same high-quality materials and attention-to-detail engineering as the rest of our irrigation line. They also have enough custom features to match your exact needs. When the goal is watering your square or rectangular field while conserving water, look no further than Reinke.

## 0.1 TWO-WHEEL POWER TOWER/HOSE PULL

Our two-wheeled option offers great versatility with features such as forward and reverse tow options, double inlet hose systems, internal check valves and quick coupler connections on both ends. A double-end feed option is also available.

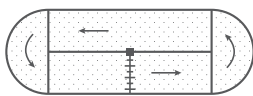
## 0.2 FOUR-WHEEL POWER TOWER/HOSE PULL

Our best option for larger fields. Floating axles keep all four tires on the ground, allowing this unit to pull large hoses (up to 8") as required by high-flow systems. With either power cord pull or an onboard power supply, this is your right-hand man.

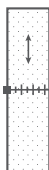
## 0.3 PIVOTING LATERAL

With one system you can now receive the benefits of both pivot and lateral move irrigation. With this highly versatile system, you can plan multiple paths for one rectangular field, L-shaped fields or numerous irregular configurations. It uses only one cart path and no towing is necessary.

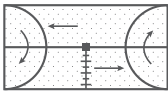
SWING OUTWARD 180°



LINEAR MODE



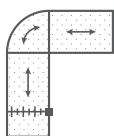
SWING INWARD 180°



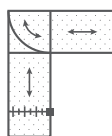
PIVOT MODE



SWING OUTWARD 90°



SWING INWARD 90°





0.4

### 0.4 CANAL FEED

The Reinke Canal Feed system carries its own pumping equipment and generator within its compact and clean design. You'll also receive annual energy savings from its ability to reduce system pressure loss by using the center-feed option in larger fields.

### GUIDANCE SYSTEM OPTIONS

- ▲ Navigator GPS – Provides extreme accuracy in timing and application
- ▲ Furrow – Uses specially designed wheels that track a V-furrow parallel to the travel path
- ▲ Buried wire – Requires less maintenance and creates no obstacles
- ▲ Cable – Assures accurate lateral movement and uniform water distribution over the entire field
- ▲ Fence – Requires minimum maintenance and creates no additional obstacles in the field



0.1



0.2

# TOWABLE SYSTEMS

*Flexibility without sacrificing strength and efficiency.*

## 0.1 FOUR-WHEEL PIVOT MOVER

Unique in its ability to quickly adapt to movement in multiple directions. Wheel hubs are mounted on base beams and can quickly swivel 90°. Plus, the quick hitch can be moved to any side for easy towing.

## 0.2 TWO-WHEEL KWIK TOW

Sets the standard for short field towable pivot systems. Available with a hydraulic lift option as well as a motorized Kwik Tow Kit that allows you to move the system laterally for short distances. Can be towed from the end of the system.

## 0.3 EDMP – SINGLE SPAN ENGINE DRIVEN PIVOT

The Reinke Engine-Driven Mini-Pivot is a single-span system ideal for small fields and areas where power access is limited. It comes with a variety of gearbox, span length and end boom options and has a maximum system length of 318'.



## **EVERY INCH. EVERY ACRE.**

Whether your farm has unirrigated corners, is oddly shaped, demands frequent light applications or has an obstacle or two, we have a specialty system that meets every one of your needs – and covers every inch of your field.

# OUR DEALERS

*Armed with a truckload of experience, expertise and extensive factory training, your Reinke dealer will work with you in everything from custom design to installation to making sure your irrigation system performs as expected year after year.*

*Like our pivots, your Reinke dealer is in it for the long haul. They'll settle for nothing less than superior irrigation performance and will always be around for unparalleled service and support.*

## 0.1 REINKE CERTIFIED PLUS

The Reinke Certified Plus Program is a Reinke Certification program that is administered by Reinke Manufacturing Co., Inc. Each person is required to take at least six classes covering a range of technical areas and pass an examination of the material covered for each class. Those that pass the exams with a score of 90% or better receive the Reinke Certified Platinum Plus distinction.

## 0.2 REINKE PRIDE

The Reinke Pride Program is a voluntary "Dealer Excellence" program administered by Reinke Manufacturing Co., Inc. There are four different levels that indicate the level of excellence achieved – Bronze, Silver, Gold and Diamond.

## 0.3 REINKE CERTIFIED

A Reinke Certified Authorized Dealer lets you know that the dealership is qualified to perform work on Reinke Irrigation Systems. Furthermore, the dealer is able to order Genuine Reinke Parts that are recommended and covered under various Reinke warranty programs ensuring your system's longevity and reliability.

## 0.4 REINKE DEALERSHIP NETWORK

With hundreds of locations across the United States and Canada, Reinke Dealers are able to provide timely service and minimize the downtime of your irrigation system.



# **EXPERIENCE & EXPERTISE**

From custom design to installation to making sure your irrigation system performs season after season – like our pivots, your Reinke dealer is in it for the long haul.



# REINKE FIRSTS

For more information visit [Reinke.com](http://Reinke.com)

- 01. Introduced the first reversible, electric-drive center pivot with collector ring allowing continuous rotation and span over 100' in length with a patented V-jack truss design
- 02. First to incorporate interchangeable pipe and truss components
- 03. First gear-driven towable system with rubber tires
- 04. Introduction of the Minigator, the first system with 4 1/2" water pipe designed for low water supplies and smaller fields
- 05. The first Chromium Nickel Plus steel water pipe option
- 06. Introduction of the first successful aluminum system, the Alumigator
- 07. The V-ring seal is completely hidden and allows the flanges to join together without the interference of a gasket, which completely protects the gasket from UV rays
- 08. The exclusive double-walled tower box provides a moisture-free environment for electrical components
- 09. Energy Saver Package for Swing Arm Corner Systems (SACs) with limited system gpm



- 10. The first bow string truss over 210'
- 11. Reinke was the first to offer successful GPS guidance for swing arm corners with the Reinke Navigator GPS
- 12. First to offer end of system and guidance for lateral systems using Reinke Navigator GPS
- 13. First to offer five types of water pipe (aluminum, galvanized steel, stainless steel, poly-lined galvanized steel and chromium nickel+) – now six (galvanized chromium nickel+)
- 14. The Reinke RPM Preferred Touch Screen Main Control Panel was the first product to bring touch screen technology into the market
- 15. Reinke was the first in the industry to integrate VRI and GPS into a touch screen control panel
- 16. First to improve Swing Arm Corner coverage, including the areas during the ESAC extension and retraction, which can qualify for precision irrigation funding program
- 17. The industry's first and only Maintenance-Free Bearing that doesn't need to be greased



# **REINKE MANUFACTURING CO., INC.**

## **NATIONAL SALES OFFICE //////////////////////////////////////////////////////////////////**

1040 Road 5300 // Deshler, Nebraska 68340

Phone: +1 (402) 365-7251

**www.reinke.com**

## **MANUFACTURING FACILITIES //////////////////////////////////////////////////////////////////**

▲ Deshler, Nebraska

▲ Belleville, Kansas

## **DISTRIBUTION CENTERS & OFFICE LOCATIONS //////////////////////////////////////////////////////////////////**

▲ Deshler, Nebraska

▲ Venado Tuerto, Argentina

▲ Amarillo, Texas

▲ Brisbane, Australia

▲ Burley, Idaho

▲ Constanta, Romania

▲ Tifton, Georgia

▲ Potchefstroom, South Africa



@reinkeirrigation 

@Reinke\_Irr 

@reinkeirrigation 

Reinke Manufacturing Co., Inc. 

Reinke Irrigation 



Part# 710060 Rev E 11/23